

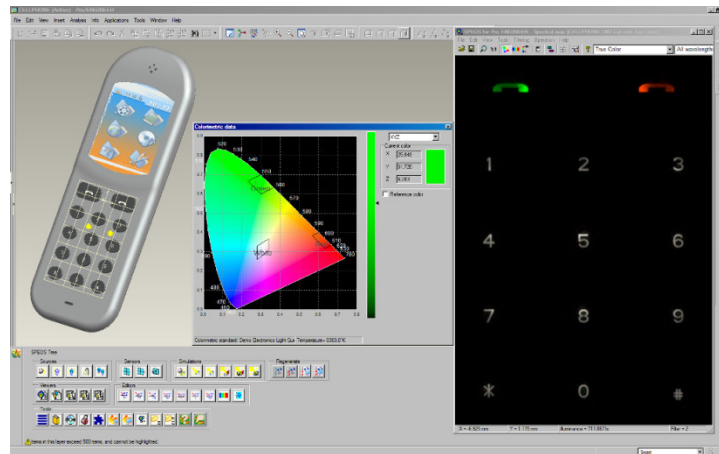


PRESS RELEASE

For immediate release

OPTIS integrates its SPEOS software into Pro/ENGINEER®

- *SPEOS light simulation software integration into Pro/ENGINEER expands designers' capabilities, enables reduced modeling time and extends OPTIS's suite to new global markets.*



***Analyze and optimize the performance of your lighting system
directly within Pro/ENGINEER®***

Toulon, France –6th May 2009 – OPTIS, the leading software developer for the scientific simulation of light, has announced that the functionality of its SPEOS optical simulation package has been integrated into PTC's Pro/ENGINEER® software solution.

Pro/ENGINEER is a leading family of three-dimensional product design solutions based on a parametric, feature-based solid modeler that enables changes made during the design process to be associatively updated throughout the design. The integration of OPTIS's SPEOS package can improve speed of design and rendering of optical and optoelectronic devices such as vehicle lights, displays and cameras.

SPEOS has long been available as a stand-alone OPTIS software product. But its redevelopment as a module compatible with Pro/ENGINEER – with significantly improved performance – means that engineering designers can now model complex integrated mechanical and optical engineering tasks seamlessly with Pro/ENGINEER.

OPTIS is confident that the SPEOS integration into Pro/ENGINEER will appeal to the substantial Pro/ENGINEER and OPTIS software user communities worldwide, especially in Asia, and in North America, where OPTIS has opened a new sales and support subsidiary in Detroit, Michigan.

"Following this latest integration, we will be offering our light simulation software to the large global marketplace of designers that use Pro/ENGINEER," said Jacques Delacour, President & CEO, OPTIS. "The combination of SPEOS and Pro/ENGINEER is ideally suited to the design and simulation of many opto-mechanical systems, such as used in electronics, transportation and lighting, so we are expecting significant sales."

PTC Product Management Senior Vice President Michael Campbell commented “With OPTIS’ integration of its SPEOS software into Pro/ENGINEER, users can now simulate, visualize and optimize the performance of light, colors, materials and ambient light conditions in their products. We are excited about the benefits this integration can bring to Pro/ENGINEER users worldwide.”

Before this development, modeling optical performance of devices in conventional CAD packages was either impossible or extremely time-consuming. However, with the introduction of SPEOS for Pro/ENGINEER designers will discover improved design functionality and save valuable time in challenging applications such as the modeling of backlit displays and the latest designs of automotive lights.

Jacques Delacour added, “Starting in 2002, we decided to integrate optical simulation into various CAD/CAM packages. I am convinced that optical simulation cannot be completely separate from the mechanical design world because optics impacts on so many parts of the overall design process. As soon as one thinks about light in applications, such as thermo- or mechanical analysis, every simulation must be inside the CAD/CAM package, when one considers the interactions of photons with a mechanical geometry.”

PTC’s Pro/ENGINEER software is already well deployed in many design applications, notably in the electronics, display and healthcare sectors.

OPTIS’s packages are often used in different marketplaces from other software solutions. Integrating SPEOS with Pro/ENGINEER will enable OPTIS to expand its market potential by an estimated 2,000 seats, according to Delacour.

Jacques Delacour also noted, “The target markets for the manufacturers using the SPEOS integrated packages would include LED systems for all industrial sectors, display design and simulation for GPS systems and head up displays (HUDs), or basically any OEM systems that propagate light through a system.” Another positive result of the integration of SPEOS with Pro/ENGINEER is that OPTIS has advanced to the “Gold Level” software partnership in the PTC PartnerAdvantage™ Program, signifying the high level of integration and cooperation between the two companies.

About OPTIS

OPTIS is a leading software developer for the scientific simulation of light and human vision within a Virtual Reality Environment. Its solutions allow designers, ergonomists and engineers to simulate and optimize lighting performance, product appearance as well as the visibility and legibility of information on human machine interfaces, in a fully-immersive environment.

Since integrating its SPEOS solution in CATIA V5 in 2002, OPTIS is still the only company to provide a light simulation solution fully based on a physical model inside a CAD/CAM software.

OPTIS has delivered more than 5500 licences to 1200 customers in 36 countries worldwide. Users include most of the major automotive, aerospace, electronics, white goods and lighting manufacturers, as well as architects, universities, research laboratories and defence agencies. They use the SPEOS technology to design, simulate and visualise in a virtual reality environment, products as diverse as automotive lighting, mobile phone screens and keypads, dashboard and cockpit displays, LCDs, LEDs, luminaires, and optics for industrial vision and medical applications.

For more information, visit www.optis-world.com

PTC and its logo, Pro/ENGINEER and all PTC product names and logos are trademarks or registered trademarks of Parametric Technology Corporation or its subsidiaries in the United States and in other countries.

OPTIS Press Contact:

Angela GREEN : agreen@optis-world.com

Tel: +33 494 08 66 90 Fax: +33 494 08 66 94